

# Department of Archaeology

## Filed Work

01. Field survey in the ancient places at the Valley of Kalu Ganga.  
(Kuruvita Batadombalena Cave and Bulathsinhala Pahiyanelena Cave)  
January 2015



Stepping towards Batadombalena one of the most Important Sites of Archaeology.  
That tells about the Evolution of man.



Batadombaleña Cave



Discussion held at Batadombaleña.



BPU Students stepping towards Pahiyan lena.



Pahiyanlena Bulatsinghala

02. Pre exploration in the historical places at the valley of Maduru Oya.  
2015 March (Kandegama, Hennanigala, Toppigala, Kunchanamale)



Archaeology site in Kandegama Kanda.



Artifacts at the Kandegama Kanda.



Students getting first hand Experience in copying an inscription through participatory observation at Kandegama Archaeological site.



Stupa at Hennanigala



Archaeology site in Toppigala



At the campsite in Toppigala.



The tedious and adventurous towards the mountain peak.



Ruins found in Toppigala.



Artifacts at Toppigala.



Artifacts at Toppigala.



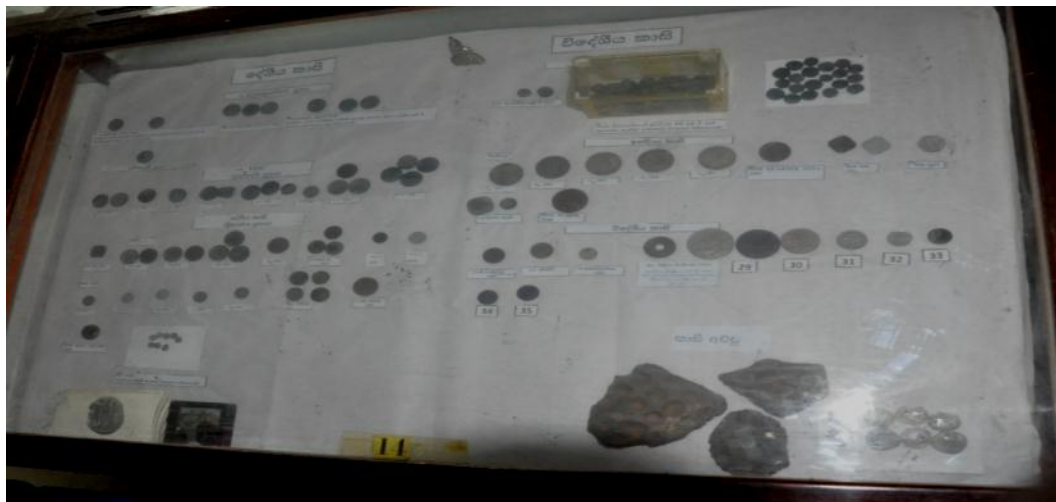
Copying of an Inscription at Toppigala.



Artifact at Kunchanamale



03. A study of the Numismatics sources at the Archaeological museum , Sri Jayawardanepura University-2015 February





BPU Students Exchanging views with scholars at Jayawardenapura University.